

FOUNDATIONS, SURFACE: Images + Design

ART 1070-02
Fall 2021

Syllabus

Carthage College/Art Department
2001 Alford Park Drive/Kenosha, WI 53140

Course Format	Studio
Main Location	JAC, Room 219
Course Times	T / TH 1:00pm-4:00pm
Professor	Jojin Van Winkle
Name Pronunciation	(zhao-zhin or joe-jhin)
Email	jvanwinkle@carthage.edu
Office Tel.	262.551.6441
Mailbox	Art Department Offices
Office	JAC 231
Virtual Office hours	4:00pm-6:30pm on Tuesdays and Thursdays or by appointment
Instruction Method	Face-to-Face
Zoom in case of Online Instruction Circumstances:	
	https://carthage-edu.zoom.us/j/92171600536?pwd=bn9YcFo-2VklhT3pCeFY3SszRiL2t6QT09
	Meeting ID: 921 7160 0536
	Passcode: 335861

WELCOME ANNOUNCEMENT

Welcome, everyone, to our shared learning community where we value each person's individual perspectives and experiences.

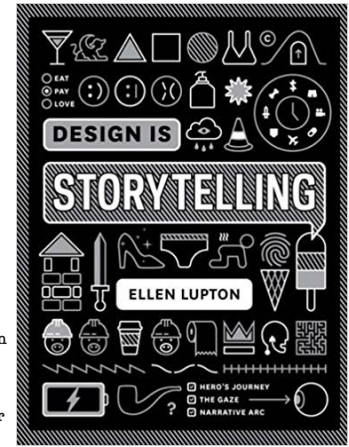
In this class we embrace a variety of diverse ideas and learning styles. We will create an environment where we all have the freedom to safely express ourselves and our ideas.

There will be a variety of teaching models with multiple opportunities to engage vocally, written, hands-on making, and/or digitally along with your creative art/design making.

COURSE DESCRIPTION

4 credits Prerequisite: None
Application of design studies to drawing, painting, printmaking, photography, mixed media, and digital art. A studio art course containing theory and practice. Students study renowned artists and artwork throughout history. Students are taught an awareness of elemental two-dimensional design factors involved in creating various types of images and investigate individual ways in which to express these factors.

BONUS INFO: Ellen Lupton is a graphic designer, educator, writer and curator of contemporary design at Cooper Hewitt, Smithsonian Design Museum in NYC and director of the Graphic Design MFA program at Maryland Institute College of Art (MICA) in Baltimore, MD. This is an interesting book for aspects of design and art.



CONNECT WITH YOUR PROFESSOR

Virtual or In-Person Office Hours:
4:00pm-6:30pm on
Tuesdays and Thursdays
or by appointment

EMAIL ME TO RESERVE A TIME!



Email Policy

When sending email please use a professional salutation (greeting): ie: Dear Prof. Van Winkle, Hi Prof. Jojin, or Hi Jojin. If we already know each other then Hey Prof. Jojin works!

I will do my best to reply to your email within 24 hours of my reading it (M-F, or the next business day). While I may sometimes respond quickly to your email, please be patient. Do not expect an instant response. Please plan accordingly. Thanks!

COURSE LEARNING GOALS/ OBJECTIVES

- to explore surfaces through images and design while developing the associated hands-on making and digital making skills and techniques
- identify the elements of art and the principles of design
- to demonstrate a basic knowledge of color theory
- to develop basic digital art skills in Adobe Illustrator and Adobe Photoshop
- to articulate the basic history of 2D Design
- to apply critical thinking about 2D Design when reviewing historical and contemporary artwork
- to employ 2D design concepts to the mediums of drawing, painting, printmaking, photography, mixed media, and digital arts
- to create art/designs that are concept-driven
- to engage in group interaction and exchange of ideas through collaborative project(s) and critiques
- to implement follow through of your ideas in your projects
- to strengthen critical thinking and analytical skills
- to grasp art health and safety methods related to the materials used
- to exhibit some of your designs/artworks (in hallways)

This course will incorporate important skills which will transfer to other disciplines, such as problem solving, critical thinking, planning, and collaboration.

MAJOR PROJECTS

Our major projects will address the following:

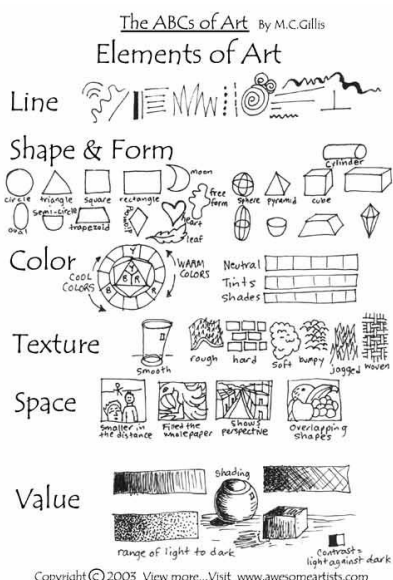
- RECREATE!: photography with smartphone or tablet & Elements of Art and Design
- COLLAGRAPHS: textured surfaces & printmaking
- MATTE SURFACES: a gouache painting project
- SHAPES & SURFACES: cutting & mixed media
- CHANCE COLLAGE: digital art project
- ALTERNATIVE PROCESSES: a photo project
- LINES & RELIEF: mixed media print and clay project
- COLORING BOOK PAGE DESIGN: digital art project
- THICK AND THIN SURFACES: an acrylic painting project
- STOP MOTION/TIMELAPSE: motion based project
- DRAWING CHALLENGES: in sketchbook
- WRITING ASSIGNMENTS: related to your reflections on projects, views on art and experiencing art in the gallery at Carthage or virtual field trips

Note: projects and materials are subject to change and may not occur in the order above.

VOCABULARY SAMPLE**

Elements of Art	Principles of Design	relief
composition	line	shape
perspective	metaphor	unity
harmony	rhythm	visual storytelling**

** Partial listing (vocabulary present per assignment/project)

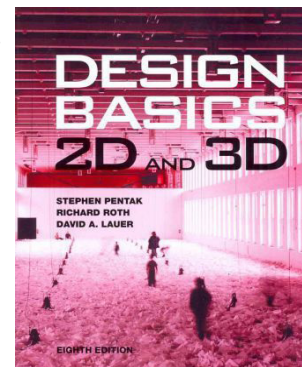


REQUIRED READING/ COURSE WEBSITE

No required textbook for our class.

If you are studying studio art you may like to get this book as a paperback or E-book.

Design Basics: 2D and 3D, 8th Edition
 Stephen Pentak; Richard Roth; David A. Lauer
 ISBN-10: 0495909971
 ISBN-13: 9780495909972
 © 2013



PDF readings will be posted for you on our course website.

Participation on and accessing the course website is required to succeed in this course. However, the information provided online should not be seen as a substitute for attending class. (See the attendance policy section).

COURSE REQUIREMENTS + COURSE CALENDAR

In order to receive credit for this course, the following is required:

- attendance on all class days,
- participation in in-class exercises/projects,
- complete sketchbook activities,
- completion of projects and exercises,
- completion of required readings,
- watch required videos,
- watch and do software tutorials,
- take quizzes,
- on-going participation in class discussions,
- participation in campus art gallery visits and virtual field trips, and;
- active participation in all class critiques.

See our Schoology Website for the Course Calendar.

CRITIQUES

For makers critiques are give and receive situations.

It's a time for critical discussion of the artwork/design work you've made for the assigned Projects.

It also is a time and place for providing constructive feedback. Guidelines for discuss will be set at the beginning of each critique.

Critiques and Assignment Re-dos

Critiques often reveal potential places for improving our work. Potentials we may not have/ did not see at first become evident to us in critique discussion. We may learn together how to make our concepts and or technique choices clearer, stronger, better etc, through our joint dialogue. As creative thinkers there are constantly ways to grow and improve our techniques and/or concepts at any given moment of the creative process.

After participating in-class critiques and your grade is posted, you have the option, if you like, to make changes to your Project/Assignment to potentially increase that Assignment's grade. Note: Assignment Re-dos must reflect substantial reflection and noticeable changes in order to warrant an increased grade. The timeframe for completing re-dos for a project is one week after the grade has been posted, or as determined through discussion with the instructor.

IMPORTANT BASIC NEEDS FOR YOUR WELL BEING

Your safety and well-being are always the first priority.

Any student who has difficulty accessing sufficient food to eat every day, or who lacks a safe and stable place to live and believes this may affect their performance in the course is urged to contact the Dean of Students Office for support (studentlife@carthage.edu).

I would also welcome you letting me know if you feel comfortable doing so, so that we can figure out together how best to support your learning.

Some specific resources you should be aware of:

Food: Luther's Lunchbox is located in the lobby of A. F. Siebert Chapel. Non-perishable food items are available for free to anyone who needs them.

Textbooks: The Big Red Book Fund has copies of many textbooks to loan to students who may struggle to purchase them. If this would be helpful to you please let me know and I can submit a request for you.

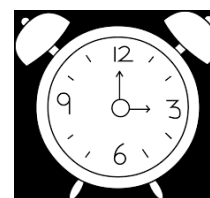
Technology: Library and Information Services provides technical assistance to the Carthage community; you can reach them at help@carthage.edu.

WORKLOAD

During this class, a large amount of material will be covered in a short amount of time.

Therefore significant time outside of class may be necessary to complete the requirements for this course.

A willingness to experiment and curiosity are required and encouraged.



PLAN TIME TO CREATE + SAVE YOUR DIGITAL ART

It may take 4-6+ hours each week for assignments. The time needed may vary for projects based on the skills you start this course with and the ways you develop throughout the course. Also materials drying time can impact needs for a project.

Attending class and working steadily is vital to finishing projects on time.

Note: I am not available to assist the night before projects are due because the project take accumulated effort and time to create. (See my email and office hours policies above.) Plan accordingly.

REMEMBER TO SAVE YOUR DIGITAL WORK ON YOUR USB DRIVE or HARD DRIVE, and also save on the Carthage Google Drive!! BACK UP AND SAVE!!

(Storage of your digital materials will be discussed in-class.) You are responsible for your digital files.

GRADING

Final grades will be determined according to the following weighted distribution:

Projects in-class and outside class:	40%
Writings Assignments:	15%
Sketchbook:	15%
Class Participation:	15%
Campus Gallery Visits & Field Trip (Virtual):	10%
Quizzes:	5%
Total Grade	100%

Note: absences and late work can effect your grade. (See policies below.)

HOW ARE ASSIGNMENTS GRADED?

Assignments are graded based on the project objectives, which include concept/content, technical skills, and other goals, plus critique attendance and participation.

The grading rubric will be listed on each individual assignment/project description.

GRADING CRITERIA

You will receive final letter grades on Projects/ Assignments and the Class, according to the following criteria:

A (93-100%): Overall Excellence, to receive an A, you must consistently exceed the expectations of the assignment. Work must go beyond the scope of the assignment, both technically and conceptually; I will be looking for real technical exploration of the tools, and a strong sense of curiosity and experimentation regarding the requirements of the assignments. In short, you will have to make work that is strong in all ways, and develop a personal aesthetic that is inventive and compelling.

A- (92-90%)

B+ (89-87%)

B (86-83%): Above average: you will meet and exceed the requirements of the assignment. Work should be both conceptually and technically strong, but there will be room for improvement.

B- (82-80%)

C+ (79-77%)

C (76-73%): Average: You have merely completed the objectives of the assignment. For example, if an assignment has called for 5 components, you have completed 5 components. However, you have not been inventive or creative enough in your solution for the assignment.

C- (72-70%)

D+ (69-67%)

D (66-63%): Below Average: You have only partially fulfilled the requirements of an assignment, by either not physically completing enough work, or by not addressing the requirements of the assignment.

D- (62-60%)

F (59 - 0%) Fail: You have not handed anything in and have not participated, etc...

Grades will be posted online via the Carthage College system in Schoology.

In order to receive full credit for class participation, you must turn in work on time and participate in all class critiques and the required virtual and/or on-campus gallery field trips.

Fall Grading Policy

Carthage will return to a traditional grading policy for the fall semester. There will be no option to change any grade to an S. F grades will also no longer automatically be changed to W's.

CLASS STRUCTURE & ATTENDANCE POLICY

The class will be held in person in the assigned studio space.

If there is a Covid related circumstance which causes our class to go remote or the college to go remote then we will meet virtually on Zoom.

Read your "Updates" on your Schoology so you can see if there are any changes to our course. I recommend checking at least the day before each class session and also the day of the class in case circumstances arise quickly.

Attendance will be taken daily. Attendance is required. Most demonstration will happen near the beginning of the class time, with supplemented with videos/tutorials as needed.

If you miss a demonstration, you are responsible for scheduling time during my office hours to acquiring the missed information.

Three absences are allowed for the course, without your overall final course grade being effected.

More than 3 absences will result in a full letter grade deduction to your final grade (for example, from a B to a C).

Please note that there are no excused absences, unless it is per the College's request/requirement emailed to the instructor, or due to significant health issue or extenuating circumstances. Should health issues or extenuating circumstances arise during the course which prevent your attendance and completion of assignments, please me (your professor) at your earliest ability and we will work out together to come up with a solution to assist you with completion of the course or figure out what works best for your particular situation.

CRITIQUES & ATTENDANCE POLICY

Critique Attendance

Timely attendance is critical to a productive critique. Critique days will be clearly marked on your course calendar.

If you miss a critique (are absent on critique day), and your work is not turned in, your grade for that assignment is automatically lowered by one whole grade. (A becomes B, B becomes C, etc.).

If you miss a critique (are absent on critique day), but your artwork is at the critique, then your grade is lowered 1/3 of a letter grade. (A becomes A-, B+ becomes B).

LATE WORK

All Assignments/Projects must be turned in on its due date. If work is turned in after the due date, it is deducted one letter grade each class meeting that has passed.

If need be, in extenuating circumstances, arrangements may be made ahead of time for extended due dates. If an arrangement to turn in late work is approved, you will be deducted one letter grade for each class meeting that has passed since the rescheduled due date.

NOTE: Work is still considered late if not uploaded to the designated location for the project (either Schoology or Google Drive, per the project) by the start of each class it is due. We will discuss how to post your digital artwork to these locations for critique times.

ACCOMMODATIONS FOR STUDENTS WITH LEARNING NEEDS

Your success in this class is important to me.

Carthage College strives to make all learning experiences as accessible as possible. If you anticipate or experience academic barriers due to your disability (including mental health, learning disorders and chronic medical conditions), please let me know immediately so that we can privately discuss options. To establish reasonable accommodations, you also need to register with Diane Schowalter in Learning Accessibility Services (dschowalter1@carthage.edu).

I wish to assure that all students are fully included in this course. Please let me know within the first two weeks of class if you need any special accommodations in carrying out assignments, in taking exams, in participating in classroom instruction, or other aspects of the course.

Please make an appointment to discuss these issues with me--it is difficult to maintain confidentiality when talking directly before or after class around other students in the shared classroom space. I will try to maintain confidentiality of the information you share with me. Please note that due to the unique participatory nature of a studio course, accommodation cannot include extension of the stated attendance/absence policy, unless otherwise directed by the College for your particular needs.

HEALTH AND COUNSELING CENTER (HCC)

The Health and Counseling Center (HCC) supports students by addressing physical, mental, and emotional well-being. All services are free and confidential and are available to currently enrolled, full-time undergraduate students. Health services include the assessment and treatment of minor illness and injury. Diagnostic testing, complimentary over-the-counter medications, and referrals to off-campus providers are all available. Our licensed counselors help students with challenges that can be resolved with short-term, solution-focused counseling. Some topics discussed during counseling include depression and anxiety, traumatic experiences, gender and sexuality, relationship concerns, stress management, and academic challenges. More details - including info about appointments - can be found at carthage.edu/health-counseling.

Uwill is a free teletherapy platform for Carthage students. Uwill connects students with licensed therapists from all 50 states. Support is available in a variety of formats -- video, chat, messaging, or phone. Counselors are available nights, weekends, and during holidays. Access is quick and easy: app.uwill.com. Suggested email signature: Students receive free, immediate access to teletherapy through Uwill. It's private, secure & confidential. [Click here to get started.](#)

HCC Hours and Location
TARC 2240 / 262-551-5710
M-F 8:30-4:00

Health Services (in-person): Call to schedule a same-day appointment; walk-ins accepted
Counseling Services (in-person): Call to schedule an appointment; walk-ins accepted M-F 11:30-1:00
*Services, hours, and walk-in availability are subject to change

ACADEMIC INTEGRITY

Each assignment (artwork), paper, presentation, and quiz/exam must be entirely your own work. You are responsible for reading and understanding the College's academic policies at <https://www.carthage.edu/academics/policies/>.

Policy on Plagiarism and Copyright Infringement

Be aware that I will not enforce against the use of copyrighted material within the context of this class, since their use may be appropriate for certain assignments and for educational purposes. However, you should be aware that this falls under the umbrella of "fair use", and that anything else you do with the materials outside of class may put you at risk of being guilty of copyright infringement. Of course, there is one simple way to deal with all of this: use original material! Use material that is licensed for Creative Commons! I will provide you with several links to databases full of open-use material.

Also, please be aware that assignments that have been completed for another class will not also be accepted for this class, even if the work in question fits the parameters of the given assignment. This will be treated as an act of academic dishonesty.

WITHDRAWING FROM THE COURSE

Contact the Carthage College Registrar's Office for the dates for drop with a refund; and the last withdrawal date to receive a "W" for the class.

PROPERLY WORN FACE MASKS ARE MANDATORY WHILE IN THE STUDIO SPACES IN THE JAC BUILDING!

PANDEMIC/ COVID-19 IMPACTS ON OUR STUDIO ART COURSE

This year Carthage is back to fully in-person Classes.

You are required to disinfect your classroom/studio workspace before and after class with the supplies provided by the college.

Should you need to quarantine or self-isolate at any point during the semester,

1. please let me know that you will need to attend virtually,
2. of course only attend virtually if/when you are well enough to participate in-class via Zoom,
3. make sure to take your studio art supplies with you when you are quarantined or self-isolating on or off of campus, and
4. please email or video chat with me directly so I can make sure you have the necessary supplies/tools for working on your projects remotely if these are supplies/tools that I as the instructor, am providing for a particular project.

CLASSROOM MASKING POLICY

Due to the ongoing pandemic, Carthage College has adopted a policy requiring masks to be worn by all individuals in all campus buildings. Masks must be worn at all times in the classroom, laboratory, studio spaces, hallways, bathrooms, and during in-person meetings. The face-covering must conform to CDC guidelines and must cover both the nose and mouth at all times.

Note that bandanas, neck gaiters, and masks with exhalation or external valves are not acceptable and are not sufficient for the protection of others or yourself. Acceptable masks tie behind the head or loop behind the ears, fit snugly over the nose and chin, and can include cloth masks, medical/surgical masks, and N95s or KN95s. Eating and/or drinking are prohibited while in the classroom (because those activities interfere with consistent mask-wearing).

Any student who refuses to wear a mask or consistently forgets one will be asked to leave the class and not given an opportunity to make up missed work. The student will also be referred to the Dean and may receive an official charge and student conduct hearing for repeated offenses, resulting in fines, points, or removal from class.

Stay Safe Guidelines:

www.carthage.edu/carthage-covid-19/stay-safe-carthage

Campus Mask Mandate:

www.carthage.edu/carthage-covid-19/protocols/face-coverings

ADDITIONAL INFORMATION REGARDING VACCINATION, TESTING, AND THE COVID-19 DASHBOARD

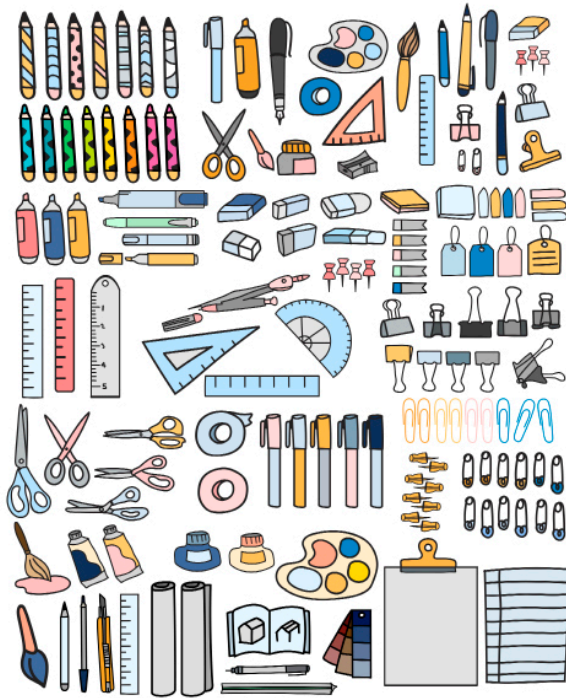
All Carthage students, faculty, and staff are required to be fully vaccinated by Sept. 15 or have an exemption on file.

All unvaccinated students, faculty, and staff will be required to participate in COVID-19 testing at least once per week. Unvaccinated student-athletes will be required to participate in more frequent testing, as much as three times per week. Student-athlete testing has already begun with preseason activities for fall sports.

[Read more about vaccinations and our upcoming campus vaccination clinics](#)

CARTHAGE COVID DASHBOARD

<https://www.carthage.edu/carthage-covid-19/dashboard/>



SUPPLIES & TOOLS FOR THIS COURSE

THE FOLLOWING WILL BE DISCUSSED IN OUR FIRST AND SECOND CLASSES.

face mask (MANDATORY)

a mask for use during each in-person class time (This is either a washable, reusable mask or disposable, one-time-use mask.)

digital storage

32 GB USB Flash Drive
or a 1TB or more External Hard Drive for digital imaging materials (This is good if you plan to do more digital art/design work)

storage (for physical supplies & tools)

Art Box - To store all your supplies. Maybe a cardboard box, tackle box, plastic bin or zippable plastic container., one (1)
24" x 36" Cardboard Portfolio (or leather portfolio case...), one (1) (optional) - Or you can build your own out of cardboard

pens & graphite pencils

Graphite Pencils: 2H, H, HB, 2B, 4B, 6B (1 each), get singularly or by a set of graphite pencils with same/similar pencils
Prismacolors or Crayola Colored Pencils - 12 set or larger set

erasers (1 each)

Kneaded Eraser
Art Gum Eraser (optional)
Mars White Eraser (optional)

papers

1 sketchbook (8"x11" or 9"x12") or larger (only hardbound or wirebound—no loose leaf drawing pads), one (1)
1-2 pads of Strathmore Mixed Media Paper Pads 400 Series 11" x 14" - 15/Sht. Glue Bound Pad
2 black mounting board/ matte board (22" x 28" or larger) or may use black poster board

paints & brushes

Gouache Artist Paint Sets: 12 or 18-Color Set - 10ml/12ml Tubes
Bag o' Brushes, 25 Pieces (or set of paint brushes with a variety of styles)
White Plastic Palette or mixing tray (small, medium or large)--prefer a medium sized one (1)--or may use wax paper or cookie sheet
BASICS Acrylic Color Sets, 6-Color BASICS Introductory Set - 22ml Tubes

tools

23" x 26" Tote Drawing Board w/ clips (holds 18"x 24" paper size)---could also use large piece of sturdy cardboard
X-acto #1 Precision Knife w/ Blade, one (1)
Self-Healing Cutting Mat, at least 12" x 18", one (1)
Artist Tape - ¼ inch wide, 10 yards, one (1)
Pair of Scissors, 8" all purpose, one (1)
18" Metal Cork Backed Ruler (or get any size: 24" or 36"), one (1)
Pencil sharpener, one (1) (metal or plastic)
Hot Glue Gun, one (1) with Hot Glue Sticks, 10+ Elmer's Glue (4 oz size or more), one (1)
Rubber Cement (4 oz size or more), one (1)
Cans/ plastic containers for water when doing painting projects, 2 or more

Other supplies and materials provided by the course.

SUPPLIED BY THIS COURSE

Various papers and printmaking supplies, misc drawing supplies, and various other materials.

Mac desktop computer access is available in the Hedberg Library outside of class time.

Mac laptop computers are available for in-class use only in our JAC 219 classroom.

(NOTE: The computers we have access to for this course have Adobe Creative Cloud (CC) with our programs on them already.

You may also purchase Adobe CC student subscription for your own computer if you like. Goto www.adobe.com for more details on pricing. (This purchase is not required for our course.)

Fall 2021 GALLERY SCHEDULE

The H.F. Johnson Gallery of Art in the JAC on Carthage College Campus:

<https://www.carthage.edu/art-gallery/>

FOR EXTRA PARTICIPATION CREDIT PLEASE ATTEND THE OPENINGS AND/OR GALLERY EVENTS.

We will visit the exhibitions during class too, yet the exhibition artists will not be present at those class times.

Natural History

Iris Bernblum and Jessie Mott

This two-person exhibition features artists Iris Bernblum and Jessie Mott. In *Natural History*, artists explore their animalic kinship as they navigate a shared longing for the unknowable natural world. The pair conjures a sensual environment by imbuing the space with scent, sound, and lush color. Bernblum's video and sculptural elements speak to ideas around our human desire to control and tame wild spaces, while Mott's watercolor drawings on paper summon fantasies of hybrid creatures.

Exhibition:

Wednesday, September 8 – Friday, October 15

Opening Reception:

Thursday, September 16, 3:30-6:30pm

Book Release and Artist Talk:

Tuesday, October 12, 6:00-7:15pm



Declassified

Aaron Delehanty and Lan Tuazon

This two-person exhibition features artists Aaron Delehanty and Lan Tuazon. Delehanty's practice consists of two perspectives on the issue of the man-made and the natural world: as a Staff-Artist at a Natural History Museum and as a studio artist playing with ideas of taxonomy, animal categories, and the systematizing of the natural world. Tuazon's sculptural work, which includes architecture, artifacts and anthropogenic materials (human effects on the environment), interrogates the shift in the order of things, taking on ecology that humbles human culture to the planetary scale of nature.

Exhibition:

Wednesday October 27 – Sunday, December 5

Opening Reception:

Thursday, October 28, 3:30-6:30p

Senior Thesis SHOWS WILL BE in Late November and /or December, in the VPAL space or the art gallery.

**HOUSEKEEPING
CONSIDERATION FOR OTHERS, THE SPACE, AND
YOUR EDUCATION**

**PROPERLY WORN MASKS
ARE MANDATORY
FOR ALL CLASS SESSIONS!**

Take notes in your hard copy sketchbooks or notebooks. Or on your laptops/ tablets—if you let the instructor know in advanced or have accommodations. (NO NOTE TAKING ON SMARTPHONES.)

Clean your area at the beginning and the end of each in-person class.

This is a shared education environment, used by other classes. (Instructions on how to do this will be given during our first in-person session.)

No food or open container beverages in the classroom/studio space nor in the shared spaces in the JAC building.

This is for your and everyone's health and safety!!



Cellphones are to be used during class-time only for assignments (projects and exercises) and for personal use on official breaks.

Texting and Social Media usage is not allowed during the class.

CHALLENGE:

Disconnect for a few hours a day--relax into your art! Do phone activities before or after the full class!

Turn phones to vibrate, airplane mode, silence and/or off, depending on your comfort level and needs.

If you are texting or using social media, etc. on your phone during class time you may be asked to leave and be considered absent for the day. **WHY?** Besides the classroom space being a professional space, this limiting of cellphone usage is you can stay focused on your artwork for the class time.

(EXCEPTION: If you need to receive or make an important/ urgent call or text, please leave the classroom and return in a timely manner when you are finished.)

Do not use listen to music, etc. during classroom instruction time, lectures, guest speakers, and critiques.

The professor will let you know when it's okay to listen to your own music.

(Listening to music and other media on headsets, earbuds, etc.. may occur when working in-class on projects, and on breaks.)

NOW LET'S CREATE SOME ART!!!!

This syllabus is subject to change, based on the needs of the class. Students will be notified in-class, via email and/or on the course website if changes occur.